

TECHNICAL DATA SHEET

ECOTHERM: Thermal insulation paint

DESCRIPTION

White, waterproof and thermal insulation paint, based on acrylic resins in aqueous emulsion and glass microspheres. It is applied indoor and outdoor, it is left as an external finish. UV-resistant, without yellowing. It is specially formulated for waterproofing thermal insulation in facades and roofs. It reflects the sun's rays and reduces the passage of heat into the indoor of the building, generating significant saving in energy consumption. It avoids condensation indoor buildings caused by difference in temperature. Its mechanical properties, water resistance, reduce the formation of cracks, compared with other market products it stands out for its resistance to atmosphere agents and good adhesion to supports like as concrete, cement, plaster, brick and moist supports.

TECHNICAL DATES

Concept	Result
* Dry to the touch	4 - 5 hours.
* Re-paint	Minimum 12 hours.
* Total polymerization	7 days.
* Saponification resistance	Excellent
* Adherence	Multiadhesion, controlling the porosity and moisture of the support.
* Finish	White, semi-matt.
* Minimum recommended thickness	200 µm
* Particle thermal conductivity.	0,066 (W/m.K)
* Performance, depends requirements	350 g/sqm.

APPLICATIONS

Essential product in today's sustainable construction.

Used in the waterproofing of party walls, roofs, terrace and metallic cover.

When used indoors, it creates a chamber effect, which avoids both hot and cold comfort temperature dissipation. Silky finish with decorative elements.

In special supports, check the adhesion is necessary. Very easy to apply.

Before application, shake the product correctly, homogenize it, using a mechanical stirrer at low revolutions, with special interest in not to foam the product. It can be diluted with 5-10% of water.

It always applies on primed surfaces, previously cleaned of dust, grease, lime. It can be applied by brush, roller or spray, (depending on the spray-gun machine and application, consult our technical department for the type of machine and nozzle). Apply at temperatures above 5°C. The temperature and environmental humidity can retard the drying, but do not reduce its conditions. Apply in 2 or 3 layers, respecting the minimum drying time between layers.

We recommend its use in combination with **ISOLATE** (sprayed cork), see **practical case**.

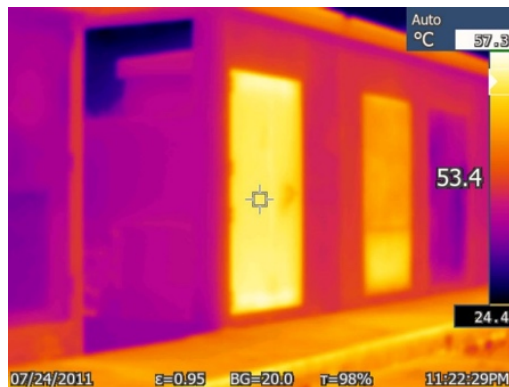
PRACTICAL CASE

Application of **ECOTHERM** en combination with **ISOLATE** (sprayed cork) to achieve a thermal insulation system.

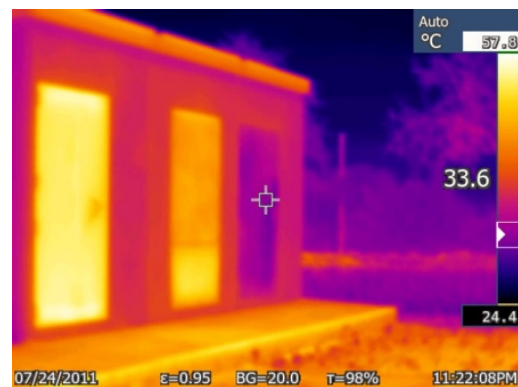


Electric maintenance station

With the help of a thermal camera we check the effectiveness of the treatment by achieving a decrease of the temperature of 20°C



Untreated metal door



Treated metal door with insulation system

STORAGE

Correct storage in its original container at temperatures between 5 y 40 °C. Do not store more than twelve months.

SAFETY INFORMATION

Check its safety data sheet.

DILUTION

The product can be diluted with water by 5 - 10%

CONTAINERS

Container of 17 Kg.

LEGAL NOTES

This information is based on our current knowledge and provides details about our products and their application possibilities. In practice, the differences in materials, substrates and actual site conditions are such that no warranty in respect of merchantability or of fitness for a particular purpose, nor any liability arising out of any legal relationship whatsoever, can be inferred either from this information, or from any written recommendations, or from any other advice offered. The user of the product must test the product's suitability for the intended application and purpose. Gardenia Química reserves the right to change the properties of its products. Users must always refer to the most recent issue of the Product Data Sheet for the products concerned.

Rev. 5 (January 2021)